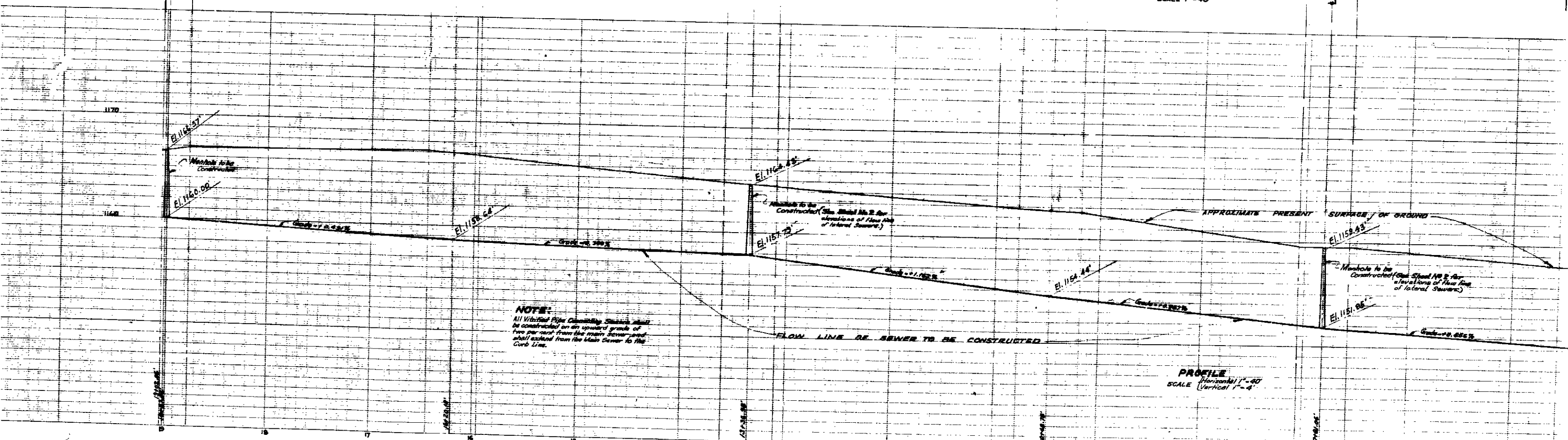


PLAN
SCALE 1"=40'



PROFILE
SCALE (Horizontal) 1"=40'
(Vertical) 1"=4'

NOTE:
All Vitrified Pipe Clay Sewer Pipes shall be constructed on an existing grade of two per cent from the main sewer line shall extend from the Main Sewer to the Curb Line.

Manhole to be Constructed (See Sheet No. 2 for elevations of flow line of lateral sewers.)

Manhole to be Constructed (See Sheet No. 2 for elevations of flow line of lateral sewers.)

Manhole to be Constructed

Sewer ordered to be constructed on Sheet No. 2

Sewer ordered to be constructed on Sheet No. 2

Manhole to be constructed

MADISON

ELEVENTH

WILSON

HANCOCK

CASS

ADAMS

57'

57'

57'

57'

57'

46.64'

46.64'

46.64'

46.64'

46.64'

116.6'

116.6'

116.6'

116.6'

116.6'

281.88'

281.88'

281.88'

281.88'

281.88'

500.00'

500.00'

500.00'

500.00'

500.00'

287.72'

287.72'

287.72'

287.72'

287.72'

108.32'

108.32'

108.32'

108.32'

108.32'

108.32'

108.32'

108.32'

108.32'

108.32'

40'

40'

40'

40'

40'

10.15'

10.15'

10.15'

10.15'

10.15'

10.15'

10.15'

10.15'

10.15'

10.15'

10.15'

10.15'

10.15'

10.15'

10.15'

10.15'

10.15'

10.15'

10.15'

10.15'

10.15'

10.15'

10.15'

10.15'

10.15'

10.15'

10.15'

10.15'

10.15'

10.15'

10.15'

10.15'

10.15'

10.15'

10.15'

10.15'

10.15'

10.15'

10.15'

10.15'

10.15'

10.15'

10.15'

10.15'

10.15'

10.15'

10.15'

10.15'

10.15'

10.15'

10.15'

10.15'

10.15'

10.15'

10.15'

10.15'

10.15'

10.15'

10.15'

10.15'

10.15'

10.15'

10.15'

10.15'

10.15'

10.15'

10.15'

10.15'

10.15'

10.15'

10.15'

10.15'

10.15'

10.15'

10.15'

10.15'

10.15'

10.15'

10.15'

10.15'

10.15'

10.15'

10.15'

10.15'

10.15'

10.15'

10.15'

10.15'

10.15'

10.15'

10.15'

10.15'

10.15'

10.15'

10.15'

10.15'

10.15'

10.15'

10.15'

10.15'

10.15'

10.15'

10.15'

10.15'

10.15'

10.15'

10.15'

10.15'

10.15'

10.15'

10.15'

10.15'

10.15'

10.15'

10.15'

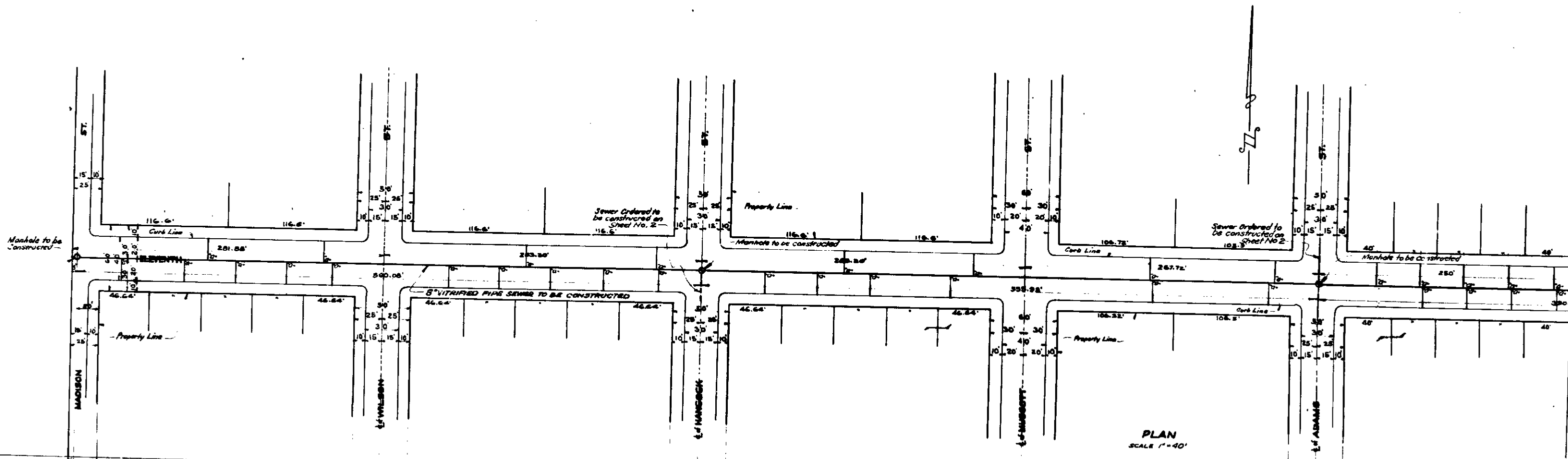
10.15'

10.15'

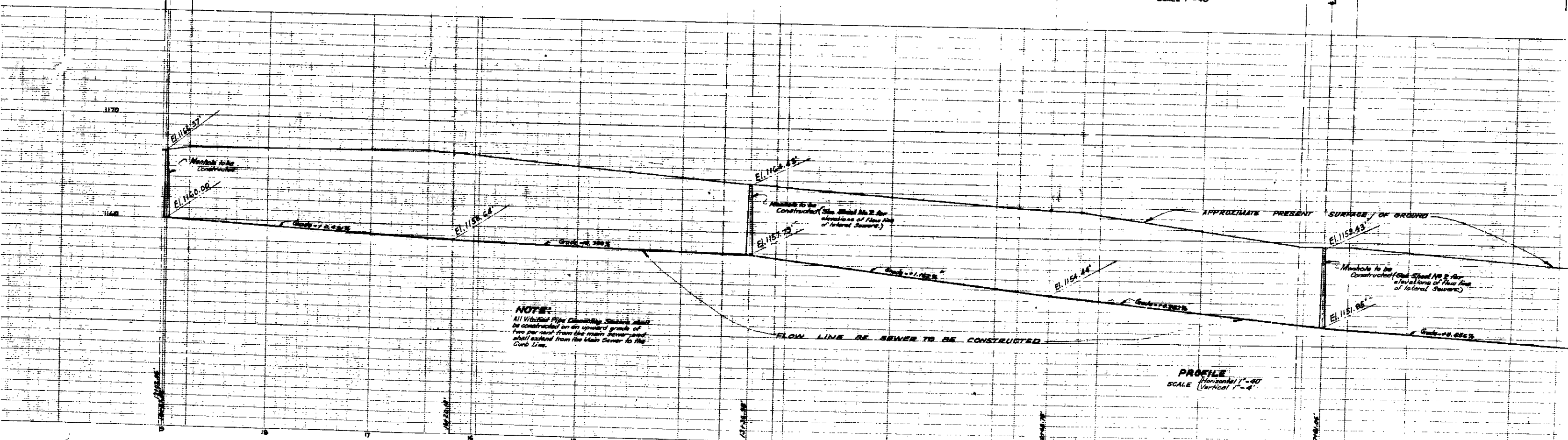
10.15'

10.15'

10.15'



PLAN
SCALE 1"=40'



PROFILE
SCALE (Horizontal) 1"=40'
(Vertical) 1"=4'

NOTE:
All Vitrified Pipe Clay Sewer Pipes shall be constructed on an existing grade of two per cent from the main sewer line shall extend from the Main Sewer to the Curb Line.

Manhole to be Constructed (See Sheet No. 2 for elevations of flow line of lateral sewers.)

Manhole to be Constructed (See Sheet No. 2 for elevations of flow line of lateral sewers.)

Manhole to be Constructed

Sewer ordered to be constructed on Sheet No. 2

Sewer ordered to be constructed on Sheet No. 2

Manhole to be constructed

8" VITRIFIED PIPE SEWER TO BE CONSTRUCTED

FLOW LINE OF SEWER TO BE CONSTRUCTED